



SE-1010

PC ECG

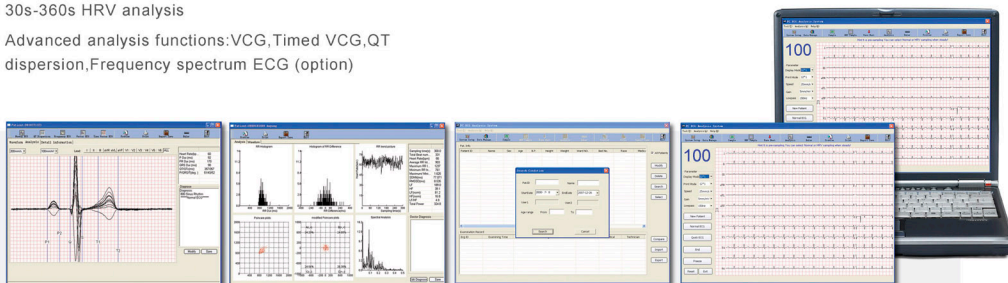
PC-based ECG SE-1010 provides you an affordable and portable 12-channel ECG solution with powerful data analysis functions

Features

- Simultaneous 12 leads acquisition
- Real-time ECG waveform display on PC screen
- Auto/Manual measurement and interpretation
- Huge data storage and powerful data management software
- Word, PDF and JPG format reports transferred via E-mail
- Stress test (option)
- 30s-360s HRV analysis
- Advanced analysis functions: VCG, Timed VCG, QT dispersion, Frequency spectrum ECG (option)

Solution

PC ECG includes a data acquisition module and a set of analysis software installed on desktops or laptops. We provide two solutions for data communication: USB connection (SE -1010) and wireless connection (SE-1010WL, coming soon) to meet different requirements in hospitals, physician offices and laboratories.

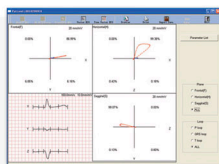


Auto/Manual measurement and interpretation

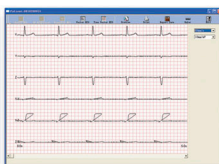
HRV analysis

Powerful database

ECG monitoring



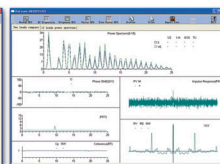
VCG



Timed VCG



QT interval dispersion



Frequency spectrum ECG

SE-1010 PC ECG



Technical specifications:

SE-1010	
Dimensions	148mm (L) × 100 mm (W) × 40mm (H)
Weight	210g approx.
Connection with PC	USB port
Power Supply	DC 5V from USB port
Input Circuit	Defibrillation protection built-in
Lead	Standard 12 leads
Acquisition Mode	12 leads simultaneously
Sampling rate	1000HZ
A/D Converter	12 bits
Input Voltage Range	± 5mVpp
Time Constant	> 3.2s
Frequency Response	0.05Hz ~ 150Hz
Calibration Voltage	1mV ± 2%
Sensitivity	2.5, 5, 10, 20 (mm/mV)
Input Impedance	50M Ω (10Hz)
Input Circuit Current	≤ 50nA
Noise Level	<15 μ Vp-p
Baseline drift filter	Baseline forward and backward filter (patent pending)
Patient Leakage Current	< 10 μ A (220V~240V)
Patient Auxiliary Current	<0.1 μ A (DC)
Filter	EMG filter: 25Hz/35Hz/45Hz/off Baseline drift filter (patent pending) : strong/weak/off Lowpass filter : 150Hz/100Hz/75Hz AC filter: 50 Hz/60Hz
CMRR	> 110dB
Rhythm Lead	Single lead or three leads selectable
Safety Standard	IEC II/CF

PC requirement:

Operation System	Windows 2000 or Windows XP
CPU	Pentium P4, Celeron D 310 or above
RAM	256MB or above
HDD	40G or above
Interface	At least 2 USB ports free

e m e c h
+ + +
m e d i c a l



CE 0123

ENG-ECG-PCECG-V1.1-20090418