

B Futura and B Classic.  
The curtain goes up on reliability.



Mocom S.r.l. reserves the right to modify the products illustrated in the photos without prior notice. MBFCGB131500

Distributed in Australia and New Zealand by:



Rear 307 Selby St, Osborne Park WA 6016 Australia  
Tel. (+61) 08 9244 3282 • Fax (+61) 08 9244 4639  
e-mail: sales@mocomaustralia.com.au  
[www.mocomaustralia.com.au](http://www.mocomaustralia.com.au)

For a retailer in your local area, please refer to the Mocom Australia website.



Via Saliceto, 22 - 40013 Castel Maggiore (BO) Italy  
Tel. (+39) 051.3760204 • Fax (+39) 051.701056  
e-mail: mocomcom@mocom.it  
[www.mocom.it](http://www.mocom.it)  
[www.emech.co.nz](http://www.emech.co.nz) | 0800 436 324



## Mocom: the art of sterilisation.

For over twenty-five years Mocom has been in the business of sterilisation and nothing but sterilisation. This is the reason why our products are totally safe, totally reliable and at the cutting edge of innovation. As a key player in the development of the sterilisation industry, Mocom is focusing exclusively on the design and production of user-friendly systems that provide consistently outstanding performance. This approach ensures we are always able to provide fast, up-to-date responses to customers changing needs.

The factors that set us apart, in terms of both skill and innovation, are conscientious attention to the choice of materials, advanced technology, enforcement of strict production and quality control protocols and the wealth of experience accumulated by our specialised sterilisation system designers. These winning attributes ensure we provide sophisticated products that not only satisfy current market needs but stay one step ahead of them.

Mocom means sterilisation. Excellence in infection control is the *raison d'être* of our products – the reason of our existence! Products that safeguard patient wellbeing and ease workflow for health workers. Yet Mocom is also much more. Excellence in product quality is supported with outstanding after sales service. From easy to understand installation and maintenance manuals to fast supply of spare parts and accessories to assistance centres available throughout the world. All of these factors have made us one of the world's leading producers of sterilisation units.



High quality production, ensured by thorough certification and approval standards, such as:

- ISO 9001/ISO 13485 Quality System applied to Medical Devices
- CE 0051 EC Medical Directive Marking



Production complies with the following standards:

- Medical Device Directive 93/42/EEC (and subsequent amendments)
- Electromagnetic Compatibility Directive 2004/108/EC
- Low Voltage Directive 2006/95/EC
- EN 13060 Small steam sterilisers
- EN 61010-1 Safety requirements for electrical equipment for laboratory use
- EN 61010-2-040 Particular safety requirements for sterilisers.

## B Futura and B Classic: a harmonious duet.



Unique expertise and professionalism have resulted in the development of the **B Futura** and **B Classic**: safe, high-performance sterilisers that ensure user-friendliness, efficient consumption and rapid execution of cycles.

Together, they provide a harmonious duet of outstanding performance and unmatched reliability, letting you dedicate more time to your work.

**B FUTURA** delivers a brilliant sterilising performance. Specifically designed for the most technologically demanding users, it offers outstanding innovation and user-friendliness. Its cutting edge systems have been designed to offer intuitive immediacy, with the modern **touch-screen** perfectly embodying what we call "evolved simplicity".

**B CLASSIC** is a masterpiece designed to simplify and speed the user's workflow. Top-quality materials, intensive laboratory testing and outstanding programme practicality make this product the new sterilisation industry benchmark.

## B Futura: Mocom's finest performance.



B Futura is an intelligent steriliser, destined to be an indispensable work tool. Only years of research and experience can produce such an exceptional result: a high performance and user-friendly product.

The new B Futura steriliser offers even faster performance, has an easy to use interface and enables full traceability of each sterilisation cycle.

There are two versions available, 17 and 22-litres. Both versions have the same overall machine dimensions and both **feature a colour touch-screen LCD display.**

## A standing ovation in praise of real class.

Thanks to the evolved control system, the B Futura offers immediate cycle selection and execution.

The **new colour touch-screen display** features clear, easy-to-understand icons that identify machine functions and operating status.

### Cycles menu

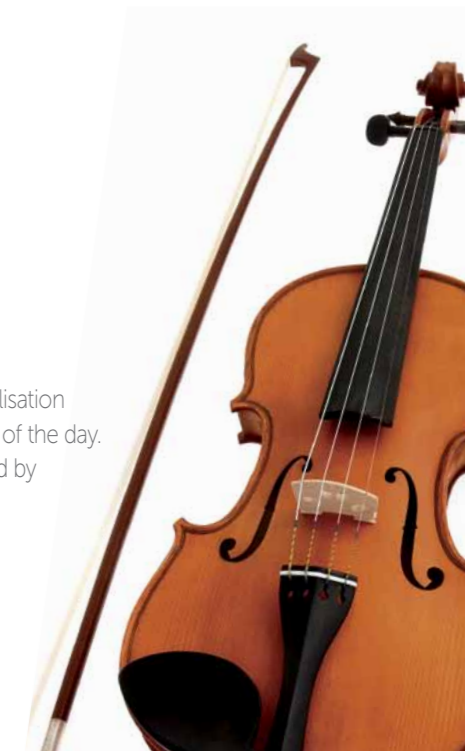


Sterilisation cycles can be selected quickly and directly via the programme-associated icons on the **touch-screen**. The display also allows the user to select the language, manage users and personalise the steriliser exactly as desired.

### Delayed start



Designed to optimise the workflow, the B Futura steriliser lets users programme sterilisation and test cycle start times to take advantage of lower electricity costs at certain times of the day. This feature can also be used to prevent any overloading of electrical systems caused by simultaneous use of several devices, or simply to have the steriliser ready at the start of the next working day.



## The curtain goes up on safety.

Thanks to latest-generation electronics, the B Futura steriliser guarantees excellent versatility when it comes to data management and secure traceability of the sterilisation process, allowing trouble free management of work that is in full compliance with strict standards and professional ethics.

### Traceability



The advanced user management system allows identification of users by means of unique personal ID codes for both traceability and post-cycle parametric release of material. All executed sterilisation processes are recorded, thus providing a further guarantee of conformity and reliable performance.

### Wi-Fi



The steriliser records all data regarding executed cycles on an internal memory. Users can download them (in pdf format) onto a PC via a USB, Ethernet or Wi-Fi (optional) connection. The Wi-Fi module also allows users to transmit cycle data and current cycle status to a tablet or smartphone, providing secure remote monitoring.

### Printing

Connection to a dedicated printer provides the user with a paper copy of the relative parameters at the end of the sterilisation cycle. Users can also produce bar code labels to identify sterilised materials.



## The secrets of success.

The new series of sterilisers have been designed to be flexible and modular. This goal has been achieved thanks to the utilisation of laboratory-tested components (electronic control unit, door locking system, vacuum pumps, manifold/electrovalves units, various types of sensors) and top quality materials (stainless steel, corrosion-proof aluminium, heat and stress-resistant plastics).

This is explained in further detail below.

### Latest features.

#### Plug & Play



The new 'Plug & Play' function makes it possible to choose B Futura accessories even after the steriliser has been purchased and is already in use. Complimentary accessories can be added without having to purchase new software or special adapters.

The **new steam generator and high performance double-head vacuum pump** ensure extremely fast cycle execution and unparalleled quality and stability of process parameters.

The **sterilisation chamber** is fully made of electro-polished stainless steel to ensure outstanding quality and durability.

The **new door locking mechanism** has been designed to ensure safety and simplicity of use. It also allows emergency recovery of the load in the event of a power supply failure.



## Water feed and connection to the water supply.



To maximise automation of the water feed we've focussed our efforts on versatility and practicality. The fill and drain reservoirs, which feature large doors, are easy to access, inspect and sanitise.

A **built-in conductivity sensor** inside the fill tank, together with an effective warning message and alarm system, automatically ensures the quality of the distilled water in use. If the water is of unsuitable quality, the steriliser notifies the user with appropriate messages and prevents use to avoid risk of damage.

All sterilisers are equipped with **manual water filling and draining** by means of 'quick couplings'. Sterilisers can also be equipped with an **automatic feed system** that draws demineralised water from an external tank. To make water feed even simpler and more efficient, the steriliser can be connected directly to a demineraliser (with ion-exchange resin cartridges or a reverse osmosis system).



## Ergonomics.

The front of the B Futura steriliser features a **LED light bar** to ensure the work area in front of the sterilisation chamber is lit perfectly without any areas of shade.



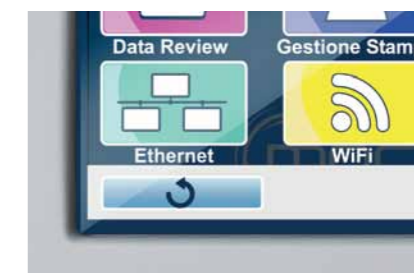
## Hygiene.

The **anti-dust filter** traps any impurities in the cooling air and protects the steriliser interior and steam condensation system.



## Guaranteed long-lasting efficiency.

The **LCD display** on the steriliser immediately informs the user when it is necessary to proceed with simple scheduled maintenance tasks.



## Remote assistance.

The new connectivity system allows technical service staff to manage requests for assistance remotely and respond to them immediately. So whatever the time or place, efficient, prompt service is guaranteed.

## B Classic: an assured success.



The B Classic was designed to make work easier by optimising time and costs. Exceptional quality and practicality ensure exceptional safety and reliability.

Easy to use, the B Classic provides full traceability of every single sterilisation cycle.

While three sterilisation chamber sizes are available (17, 22 and 28 litres) the external dimensions remain the same for all the volumes. All versions feature a monochromatic LCD display and keypad.

## A star is born.

Careful design and optimisation of all components make the B Classic steriliser ideal for those requiring easy, safe and reliable sterilisation procedures.



High-grade performance, in terms of both cycle execution speed and thermodynamic parameter quality, is ensured by the **new steam generator and double-head vacuum pump**.

The **electro-polished stainless steel** sterilisation chamber delivers outstanding quality and even longer-lasting durability.

Like the others, this model adopts the new safe and simple **door locking mechanism** which ensures the load can be recovered in the event of a power failure.

## Controlled and monitored machine management.



The **anti-dust filter** traps impurities in the cooling air and protects the steriliser interior and steam condensation system.



To allow fast identification of users with regard to executed cycles, the B Classic steriliser can be managed using an **ID PIN system**. Once the cycle has been completed, the B Classic records the data on the internal memory in pdf format. The saved data can be downloaded later onto a PC via a standard USB memory device.



Lastly, thanks to the information on the LCD display, the user is immediately informed as soon as simple **scheduled maintenance tasks** become necessary: a solution that ensures excellent, long-lasting steriliser performance and reliability.

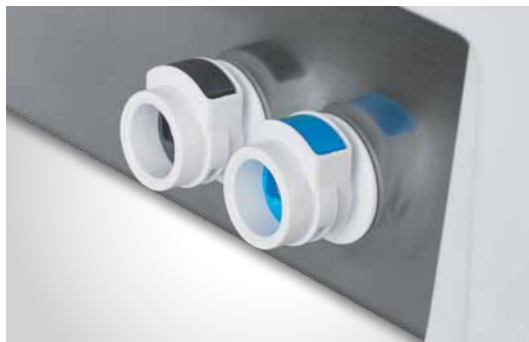
## Water feed and connection to the water supply.



The water feed system is now even more practical and versatile thanks to full **automation** provided by the water level sensors. The filling/draining tanks feature large doors to make access, inspection and sanitisation easy.



The quality of the distilled water being used is guaranteed by the **conductivity sensor incorporated in the tank** and an efficient warning message/alarm system. If the water is of unsuitable quality, the steriliser notifies the user with appropriate messages and prevents use of the steriliser to avoid risk of damage.



The **quick coupling system** for water filling and draining on the front of the steriliser simplifies filling and draining of tanks when access to the top-opening tanks is restricted by overhead fixtures. And that's not all: it is also possible to equip the steriliser with an **automatic filling system** that draws water from an external tank. The B Classic can also be connected to a demineraliser (with ion exchange resins or reverse osmosis) to make the water supply even more efficient.

## Plug & Play



B Classic accessories have been designed so the steriliser can be configured according to user specific needs at any time. Accessories can also be installed even if the machine is already in use as they can be integrated smoothly without any need for special software or adapters.



## Technical Support

Our machines are reliable and safe because our technicians are trained to levels of excellence. Thanks to the expertise that sets us apart from the rest, we are able to offer fast, comprehensive after sales technical support.





## The instruments in the Mocom orchestra.

New needs arise in the workplace constantly. That's why Mocom offers you a comprehensive range of innovative accessories that can be connected to your steriliser at any time. Both the B Futura and B Classic combine full flexibility and modularity with utmost simplicity.

All of our accessories can be attached without the need of adaptors and do not require the purchase of additional components.

- 1 **Pure 100**  
The Pure 100 resin demineraliser consists of two ion exchange resin cartridges. This system eliminates the ions that contaminate mains water, allowing high quality demineralised water to be produced. The cartridges can be replaced in just a few, simple steps.
- 2 **Pure 500**  
The Pure 500 reverse osmosis demineraliser is an ecological system that ensures, cycle after cycle, the correct supply of demineralised water to Mocom autoclaves. Passing the mains water through an osmotic membrane eliminates both organic and inorganic substances, resulting in water that is perfect for sterilisation.

### PURE demineralisers

Technical data	Pure 100	Pure 500
Water input	Mains water	Mains water
Water output (conductivity)	< 15 µS/cm	< 15 µS/cm
Min. and Max. mains water pressure	1-5 bar	1-5 bar
Min. and Max. mains water temperature	+5°C ÷ +40°C	+5°C ÷ +40°C
Dimensions L x H x P	366 x 365 x 143 mm	461 x 328 x 206 mm
Weight	3,5 kg	5,5 kg

## Accessories



- 3 **External bar code printer**  
Specially designed for Futura autoclaves, this printer produces automatic-peel self-adhesive bar code labels to simplify cycle traceability.
- 4 **External printer**  
Connected to the B Futura and B Classic sterilisers via a RS232 serial port; allows executed cycle data to be printed on rolls of thermal paper or labels.
- 5 **Wi-Fi module**  
The Wi-Fi module allows real-time transmission of cycle data and cycle progress information to a PC or tablet; it also allows reports on executed cycles to be downloaded.
- 6 **Front filling kit**  
This kit allows the steriliser to be filled from the front via a quick coupling. Useful in situations where filling from above is difficult.
- 7 **Automatic filling kit**  
Consists of an external pump powered by the steriliser, and allows demineralised water to be withdrawn from a tank or recipient.

### Accessory compatibility

Accessories	B Futura	B Classic
Pure 100	o	o
Pure 500	o	o
Automatic filling kit	o	o
Front filling kit	o	o
External printer	o	o
External bar code printer	o	-
Wi-Fi module	o	-

o = optional

- = unavailable

Mocom in tune with your needs.



Technical data

Technical data	B Futura 17	B Futura 22	B Classic 17	B Classic 22	B Classic 28
Power supply voltage	220/240 V (other voltages on request)	220/240 V (other voltages on request)	220/240 V (other voltages on request)	220/240 V (other voltages on request)	220/240 V (other voltages on request)
Mains frequency	50/60 Hz	50/60 Hz	50/60 Hz	50/60 Hz	50/60 Hz<
Rated power	2300 W (10 A)	2300 W (10 A)	2300 W (10 A)	2300 W (10 A)	2500 W (11 A)
External dimensions L x H x D	495 x 485 x 600 mm	495 x 485 x 600 mm	495 x 485 x 600 mm	495 x 485 x 600 mm	495 x 485 x 600 mm
Total weight	50 kg	55 kg	47 kg	55 kg	58 kg
Autonomy	From 6 to 10 cycles	From 6 to 10 cycles	From 6 to 10 cycles	From 6 to 10 cycles	From 6 to 10 cycles
Chamber dimensions Diam. x Depth	250 x 350 mm	250 x 450 mm	250 x 350 mm	250 x 450 mm	280 x 450 mm

Cutting-edge technology ensures Mocom sterilisers are high-performance, safe and reliable. Thanks to fast, effective cycles you can enjoy peace of mind and dedicate more time to your work.

Sterilisation cycles

CYCLE	Cycle type	Sterilisation time	B Futura 17	B Futura 22	B Classic 17	B Classic 22	B Classic 28
		(min)		Overall cycle times (min)			
134°C UNIVERSAL	B	4	28	38	37	40	55
121°C UNIVERSAL	B	20	43	52	52	55	70
134°C UNWRAPPED HOLLOWES	S	4	23	32	32	34	45
134°C WRAPPED SOLIDS	S	4	22	29	33	31	42
134°C PRION	B	20	44	54	53	57	71
xxx° C CUSTOM			Cycle can be personalised by user with temperatures 121°C / 134°C and process times starting from 4' (134°C) to 20' (121°C) and settable drying				
VACUUM TEST			24	25	27	25	27
HELIX/B&D TEST			20	29	29	31	40
VACUUM + HELIX/B&D TEST (can be executed in sequence)			52	64	64	66	79

Equipment provided and accessories

Equipment provided	B Futura	B Classic
Ethernet (RJ 45 port)	●	-
Anti-dust filter	●	●
Bacteriological filter	●	●
LED lighting	●	-
Trays	5	3 for models 17 and 22, 6 for the 28 model
Tray extractor	●	●
Tray support	●	●

- = standard
- = unavailable